



ATC's Planning and Involvement with Regional Generator Outlet Study

UMTDI Transmission Planning Work Group

January 30, 2009

Flora Flygt, Director of Planning
American Transmission Company

Transmission-only company

Operational January 1, 2001

\$2.5 billion in net plant assets, up from \$400 million

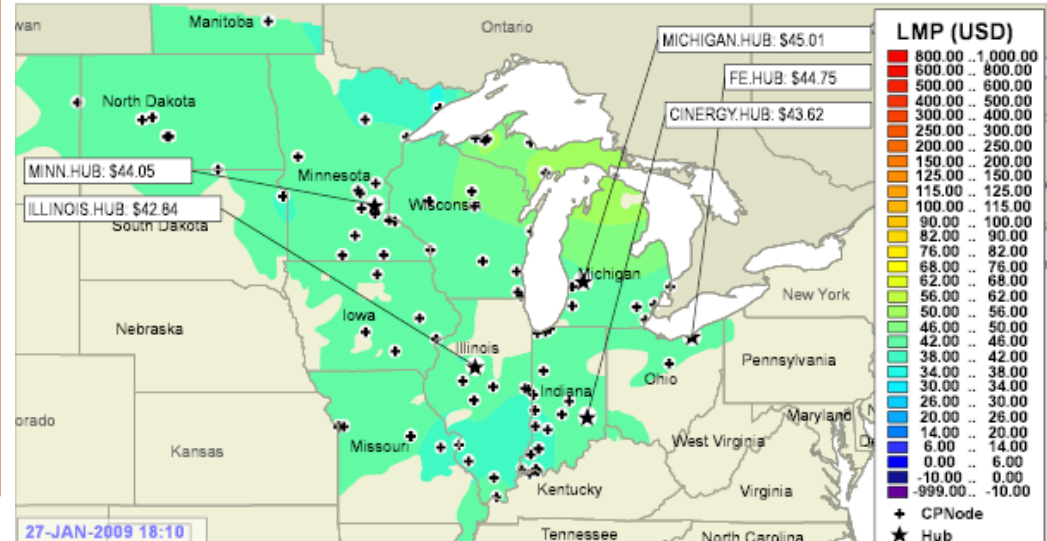
Own 9,350 circuit miles of transmission lines

Regulated by FERC for tariff and state regulatory agencies for need approval and siting

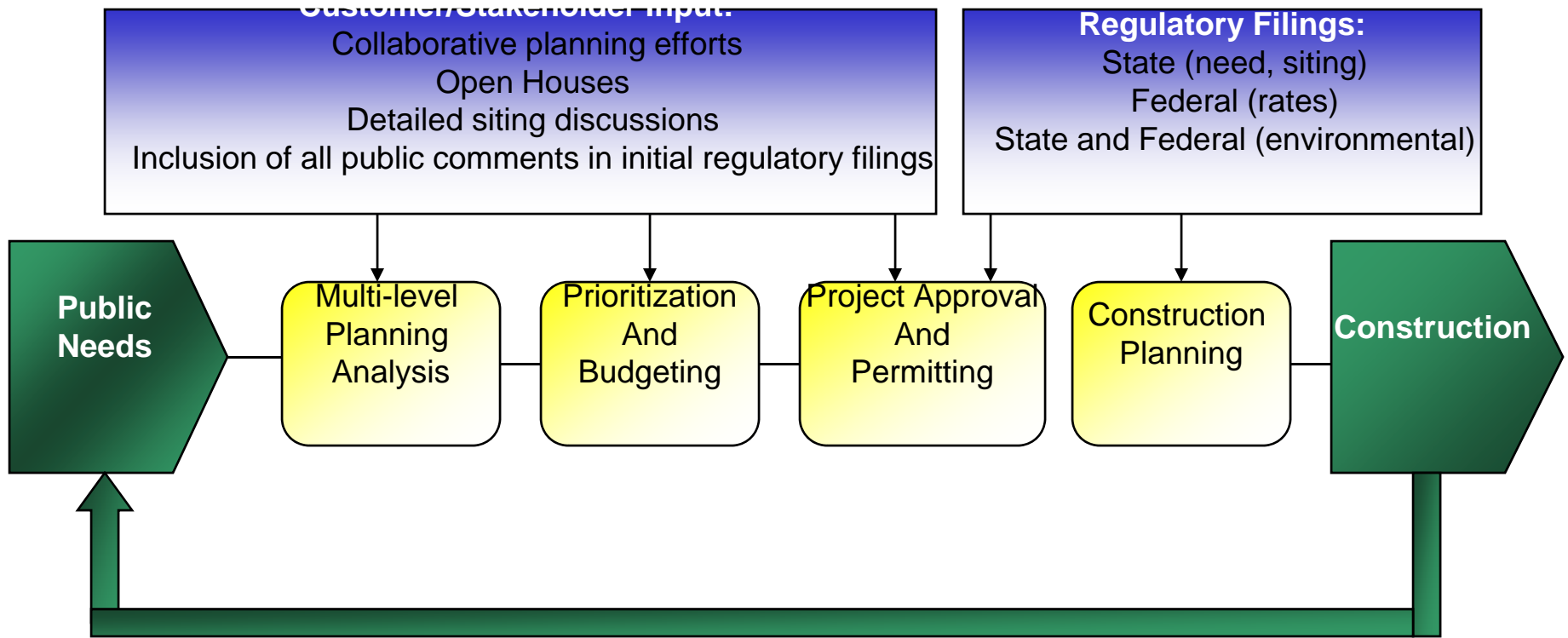
Headquartered near Milwaukee, Wisconsin

Member of MISO but not Market Participant

Website: www.atcllc.com



“All Transmission is Local”



All transmission siting is local in nature, with incumbent utilities best suited to construct transmission within their footprints.

2009 Ten Year Assessment

Economic project analysis – three 345-kV lines

Bain-Zion

North LaCrosse- Hilltop-Spring Green-Cardinal

Salem-Spring Green-Cardinal

Upper Peninsula – MI Energy Collaborative

MI Renewable Energy Zones

Western Wisconsin reliability study

Xcel, DPC, ITCM, GRE, SMMPA, ATC working together

MISO will help develop cases

G-T and T-D interconnections

Active participation in the Regional Generator Outlet Study



Attendance at all RGOS meetings

Assistance to MISO on generation siting algorithm

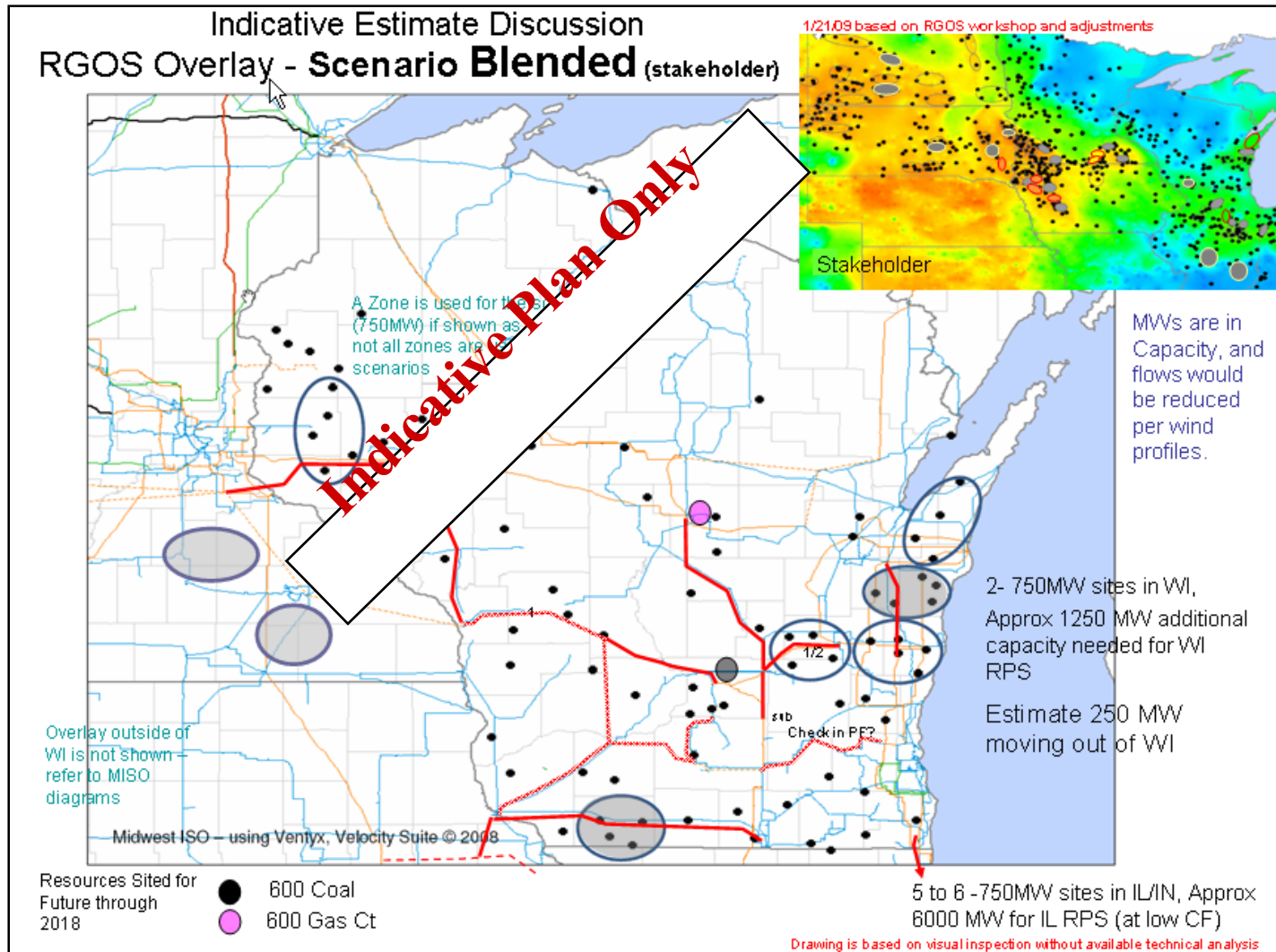
Recommendations to refine PROMOD assumptions

Idea of a blended scenario, also suggested by MN participants

Overlay ideas in ATC footprint and ties for the selected scenarios

Scenario changes for off-shore wind

Appreciate MISO's willingness to work with us



Reviewing and understanding MISO

“Indicative Plan” results

Develop communication plan

Who, what, when

How do we build understanding and support?

Defining next steps: How do you go from an
“indicative plan” to approvable projects?

What are the criteria that public utility
commissions will use to approve these projects?

Questions?